



FITZGIBBON HOSPITAL LUNG CANCER SCREENING PROGRAM *with Low-Dose CT*

Lung cancer is the leading cause of cancer death and the second most common cancer among both men and women in the United States.

**If you think
you are a
candidate
for a
lung cancer
screening,
ask your
primary care
provider
to refer you to
FITZGIBBON
HOSPITAL
RADIOLOGY
for a
Low-Dose CT.**

Approximately 90% of instances of lung cancer is directly linked to smoking. For Saline County, this is especially problematic because 29% of Saline County residents smoke, according to the 2015 County Health Rankings published by the Robert Woods Johnson Foundation.

To lower the risk of cancer deaths due to lung cancer in Saline County, Fitzgibbon Hospital is announcing a new lung cancer screening program with low-dose CT.

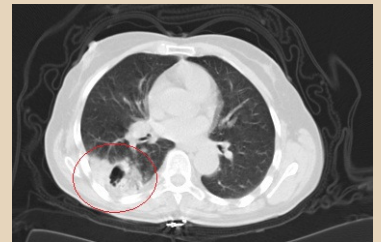
You qualify to receive a low-dose CT if you meet the following requirements:

(Check with your insurance plan to verify coverage.)

- **Age 55-77**
- **30 pack year history of smoking**
 - * 30 pack year is defined as 1 pack per day for 30 years; 2 packs per day for 15 years, etc.
- **No current symptoms for lung cancer**
- **It has been at least 6 months since your last CT**

To rule out potentially-dangerous lung cancer, consult with your primary care provider to see if you are a candidate for low-dose CT. If you do not have a primary care provider, the caring staff at **Marshall Family Practice** are available by calling **660.886.7800** for an appointment.

Low-dose CT images showing lung cancer



2305 South Highway 65
Marshall, MO 65340
660.886.7431